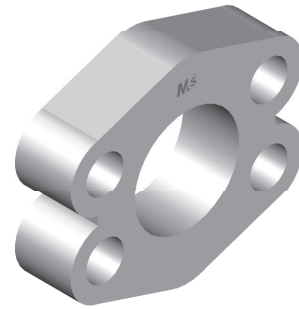
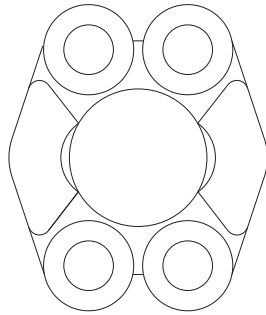
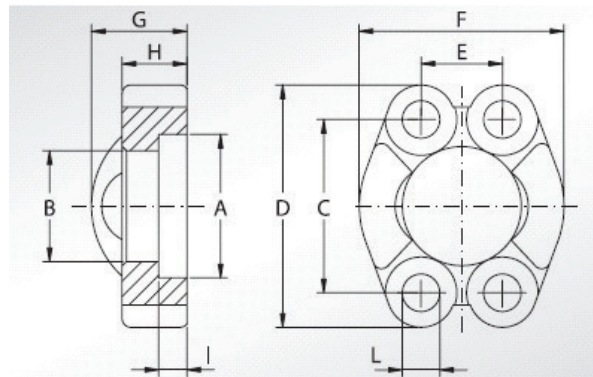


SEMI FLANGIA INTERA SAE 3000 SPLIT FLANGE SAE 3000 - UNCUT



Codice Part Number	Per Flangia Da: For Flange By:
USF300008	1/2"
USF300012	3/4"
USF300016	1"
USF300020	1" 1/4
USF300024	1" 1/2
USF300032	2"



DIMENSIONI TECNICHE - TECHNICAL DATA											
CODICE	maximum	A	B	C	D	E	F	G	H	I	L
PART	Kg/cm2	MM	MM	MM	MM	MM	MM	MM	MM	MM	MM
USF300008	345	30,96	24,26	38,10	54,0	17,48	45,60	19,00	13,00	6,22	8,75
USF300012	345	38,89	32,13	47,63	65,0	22,23	51,80	22,00	14,00	6,22	10,75
USF300016	345	45,24	38,48	52,37	70,0	26,19	58,40	24,00	16,00	7,49	10,75
USF300020	276	51,59	43,69	58,72	79,0	30,18	72,60	22,00	14,00	7,49	12,00
USF300024	207	61,09	50,80	69,85	94,0	35,71	82,20	25,00	16,00	7,49	13,50
USF300032	207	72,24	62,74	77,77	102,0	42,88	96,40	26,00	16,00	9,02	13,50