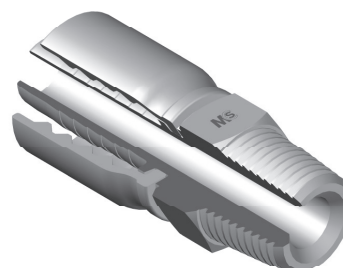
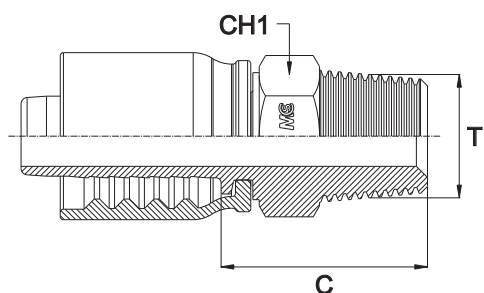


MASCHIO SVASATO 60°

Filetto Gas Conico

MALE 60° CONE

Thread BSP Taper

- AGR-K -

Bar W.P.	Codice Part Number	Filetto Thread	Ø Int. Tubo Inch. Hose I.D.	C Cut - Off	CH1
415	BSPTM0203PC	1/8"	3/16"	22,5	14
450	BSPTM0204PC	1/8"	1/4"	22,5	14
415	BSPTM0403PC	1/4"	3/16"	26,7	14
450	BSPTM0404PC	1/4"	1/4"	27,0	14
350	BSPTM0405PC	1/4"	5/16"	27,5	14
450	BSPTM0406PC	1/4"	3/8"	27,3	17
	BSPTM0604PC	3/8"	1/4"	28,6	19
350	BSPTM0605PC	3/8"	5/16"	29,0	19
450	BSPTM0606PC	3/8"	3/8"	29,5	19
415	BSPTM0608PC	3/8"	1/2"	29,0	19
350	BSPTM0610PC	3/8"	5/8"	29,5	22
	BSPTM0804PC	1/2"	1/4"	32,0	22
415	BSPTM0806PC	1/2"	3/8"	33,0	22
	BSPTM0808PC	1/2"	1/2"	32,5	22
	BSPTM0810PC	1/2"	5/8"	28,5	22
	BSPTM0812PC	1/2"	3/4"	36,5	27
350	BSPTM1208PC	3/4"	1/2"	35,0	27
	BSPTM1210PC	3/4"	5/8"	36,3	27
	BSPTM1212PC	3/4"	3/4"	36,5	27
	BSPTM1216PC	3/4"	1"	37,5	32
280	BSPTM1612PC	1"	3/4"	43,5	36
	BSPTM1616PC	1"	1"	44,5	36
	BSPTM1620PC	1"	1"1/4"	47,0	41
210	BSPTM2016PC	1"1/4"	1"	47,0	46
	BSPTM2020PC	1"1/4"	1"1/4"	48,0	46
185	BSPTM2424PC	1"1/2"	1"1/2"	46,0	50