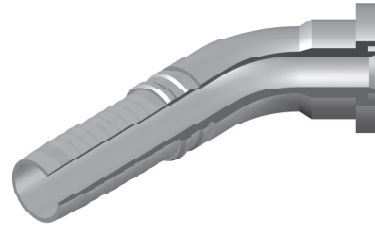
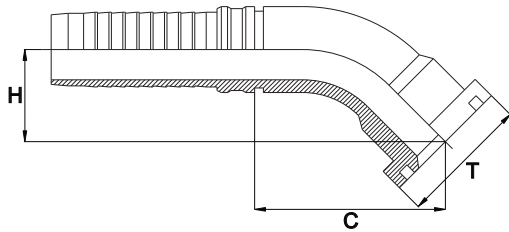


FLANGIA 45° SAE SERIE 6000 PSI INTERLOCK
INTERLOCK 45° SAE FLANGE 6000 PSI SERIES



Bar W.P.	Codice Part Number	Flangia Flange	Ø Int. Tubo Inch. Hose I.D.	T	C Cut - Off	H Drop
420	45INTSF60001212	3/4"	3/4"	41,3	-	-
	45INTSF60001612	1"	3/4"	47,6	-	-
415	45INTSF60001616	1"	1"	47,6	94,2	31,8
	45INTSF60002016	1" 1/4	1"	54,0	-	-
	45INTSF60002020	1" 1/4	1" 1/4	54,0	-	-
	45INTSF60002420	1" 1/2	1" 1/4	63,5	-	-
345	45INTSF60002424	1" 1/2	1" 1/2	63,5	-	-
	45INTSF60003224*	2"	1" 1/2	79,4	-	-
	45INTSF60003232	2"	2"	79,4	-	-

* Saldata

* Welded