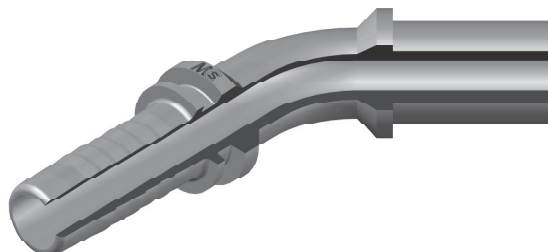
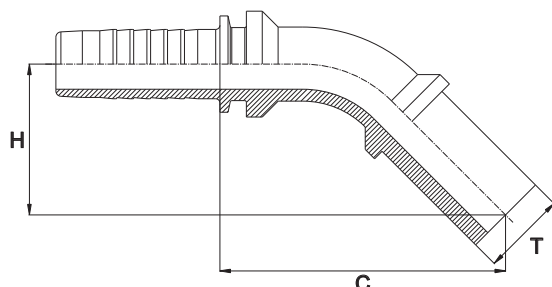


**FEMMINA METRICA TUBOLARE 45° - SERIE LEGGERA/PESANTE**  
**45° METRIC STANDPIPE - LIGHT/HEAVY TYPE**  
**- BEL/BES 45° -**



| Bar W.P. | Codice Part Number | T Ø Tubo Ø Tube | Ø Int. Tubo Inch. Hose I.D. | C Cut - Off | H Drop |
|----------|--------------------|-----------------|-----------------------------|-------------|--------|
| 415      | 45SLH0603          | 06 L/S          | 3/16"                       | 48,0        | 27,5   |
| 320      | 45SLH0604          | 06 L/S          | 1/4"                        | 48,5        | 23,0   |
| 415      | 45SLH0803          | 08 L/S          | 3/16"                       | -           | -      |
| 450      | 45SLH0804          | 08 L/S          | 1/4"                        | -           | -      |
| 320      | 45SLH0805          | 08 L/S          | 5/16"                       | -           | -      |
| 350      | 45SLH1003          | 10 L/S          | 3/16"                       | -           | -      |
| 450      | 45SLH1004          | 10 L/S          | 1/4"                        | 46,0        | 23,0   |
| 350      | 45SLH1005          | 10 L/S          | 5/16"                       | -           | -      |
| 330      | 45SLH1006          | 10 L/S          | 3/8"                        | 63,0        | 26,0   |
| 450      | 45SLH1204          | 12 L/S          | 1/4"                        | 48,5        | 22,0   |
| 350      | 45SLH1205          | 12 L/S          | 5/16"                       | -           | -      |
| 445      | 45SLH1206          | 12 L/S          | 3/8"                        | 63,0        | 26,5   |
| 250      | 45SLH1208          | 12 L/S          | 1/2"                        | 74,0        | 26,5   |
| 445      | 45SH1406           | 14 S            | 3/8"                        | -           | -      |
| 415      | 45SH1608           | 16 S            | 1/2"                        | 74,5        | 26,5   |
| 350      | 45SH2010           | 20 S            | 5/8"                        | 73,5        | 33,5   |
| 215      | 45SH2012           | 20 S            | 3/4"                        | -           | -      |
| 350      | 45SH2512           | 25 S            | 3/4"                        | -           | -      |
| 165      | 45SH2516           | 25 S            | 1"                          | 118,2       | 48,5   |
| 250      | 45SH3016           | 30 S            | 1"                          | -           | -      |
| 210      | 45SH3820           | 38 S            | 1"1/4                       | -           | -      |
| 250      | 45SL1508           | 15 L            | 1/2"                        | 72,0        | 31,5   |
| 160      | 45SL1808           | 18 L            | 1/2"                        | -           | -      |
|          | 45SL1810           | 18 L            | 5/8"                        | -           | -      |
|          | 45SL2212           | 22 L            | 3/4"                        | -           | -      |
| 100      | 45SL2816           | 28 L            | 1"                          | -           | -      |
|          | 45SL3520           | 35 L            | 1"1/4                       | -           | -      |
|          | 45SL4224           | 42 L            | 1"1/2                       | 176,5       | 55,5   |