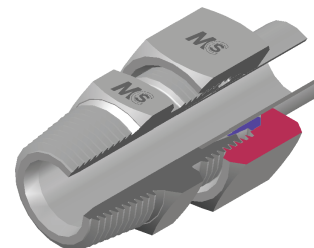
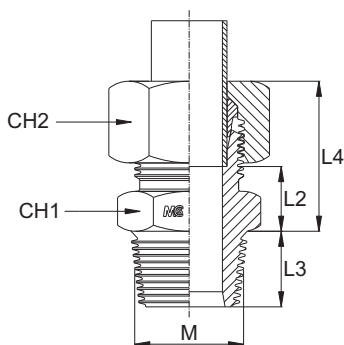
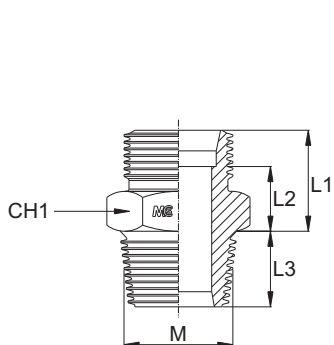


DIRITTO DI ESTREMITÀ

Filetto Metrico Conico

MALE STUD COUPLING

Metric Taper Thread



Serie Series	Bar W.P.	Codice (Corpo) Part Number (Body)	Codice (Completo) Part Number (Complete)	Ø Est. Tubo Tube O.D.	M	L1	L2	L3	L4	CH1	CH2
L	315	GE06LM101KB	GE06LM101K	6	10x1,0	14,0	7,0	8,0	22,0	14	14
		GE08LM1215KB	GE08LM1215K	8	12x1,5	15,0	8,0	12,0	23,0	17	17
		GE10LM1415KB	GE10LM1415K	10	14x1,5	16,0	9,0	12,0	24,0	17	19
		GE12LM1615KB	GE12LM1615K	12	16x1,5	17,0	10,0	12,0	24,5	19	22
		GE15LM1815KB	GE15LM1815K	15	18x1,5	18,0	11,0	12,0	26,0	24	27
		GE18LM2215KB	GE18LM2215K	18	22x1,5	19,0	11,5	14,0	28,0	27	32
S	630	GE06SM1215KB	GE06SM1215K	6	12x1,5	18,0	11,0	12,0	26,0	17	17
		GE08SM1415KB	GE08SM1415K	8	14x1,5	20,0	13,0	12,0	28,0	17	19
		GE10SM1615KB	GE10SM1615K	10	16x1,5	20,0	12,5	12,0	28,5	19	22
		GE12SM1815KB	GE12SM1815K	12	18x1,5	22,0	14,5	12,0	30,5	22	24
		GE14SM2015KB	GE14SM2015K	14	20x1,5	24,0	16,0	14,0	34,0	24	27
		GE16SM2215KB	GE16SM2215K	16	22x1,5	24,0	15,5	14,0	34,0	27	30