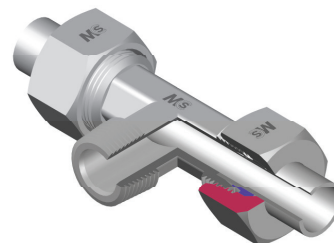
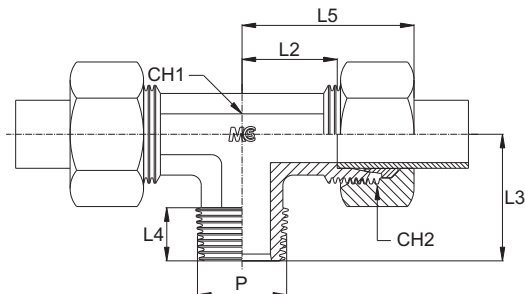
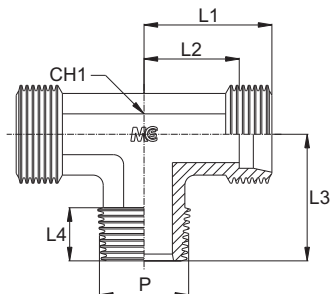


ADATTATORE MASCHIO DI ESTREMITÀ A T CENTRALE

Filetto NPT

MALE STUD BRANCH TEE

NPT Thread



Serie Series	Bar W.P.	Codice (Corpo) Part Number (Body)	Codice (Completo) Part Number (Complete)	Ø Est. Tubo Tube O.D.	P	L1	L2	L3	L4	L5	CH1	CH2
L	315	TC06L1/8NPTB	TC06L1/8NPT	6	1/8"	19,0	12,0	20,0	10,0	27,0	12	14
		TC08L1/4NPTB	TC08L1/4NPT	8	1/4"	21,0	14,0	26,0	15,0	29,0	12	17
		TC10L1/4NPTB	TC10L1/4NPT	10	1/4"	22,0	15,0	27,0	15,0	30,0	14	19
		TC12L3/8NPTB	TC12L3/8NPT	12	3/8"	24,0	17,0	28,0	15,0	32,0	17	22
	TC15L1/2NPTB	TC15L1/2NPT	15	1/2"	28,0	21,0	34,0	19,5	36,0	19	27	
	TC18L1/2NPTB	TC18L1/2NPT	18	1/2"	31,0	23,5	36,0	19,5	40,0	24	32	
	160	TC22L3/4NPTB	TC22L3/4NPT	22	3/4"	35,0	27,5	42,0	20,0	44,0	27	36
		TC28L1NPTB	TC28L1NPT	28	1"	38,0	30,5	48,0	25,0	47,0	36	41
TC35L11/4NPTB		TC35L11/4NPT	35	1,1/4"	45,0	34,5	57,0	25,5	56,0	41	50	
TC42L11/2NPTB		TC42L11/2NPT	42	1,1/2"	51,0	40,0	61,0	26,0	63,0	50	60	
S	630	TC06S1/4NPTB	TC06S1/4NPT	6	1/4"	23,0	16,0	26,0	15,0	31,0	12	17
		TC08S1/4NPTB	TC08S1/4NPT	8	1/4"	24,0	17,0	27,0	15,0	32,0	14	19
		TC10S3/8NPTB	TC10S3/8NPT	10	3/8"	25,0	17,5	28,0	15,0	34,0	17	22
		TC12S3/8NPTB	TC12S3/8NPT	12	3/8"	29,0	21,5	28,0	15,0	38,0	17	24
		TC14S1/2NPTB	TC14S1/2NPT	14	1/2"	30,0	22,0	34,0	19,5	40,0	19	27
	400	TC16S1/2NPTB	TC16S1/2NPT	16	1/2"	33,0	24,5	36,0	19,5	43,0	24	30
		TC20S3/4NPTB	TC20S3/4NPT	20	3/4"	37,0	26,5	42,0	20,0	48,0	27	36
		TC25S1NPTB	TC25S1NPT	25	1"	42,0	30,0	48,0	25,0	54,0	36	46
		TC30S11/4NPTB	TC30S11/4NPT	30	1,1/4"	49,0	35,5	57,0	25,5	62,0	41	50
		315	TC38S11/2NPTB	TC38S11/2NPT	38	1,1/2"	57,0	41,0	61,0	26,0	72,0	50