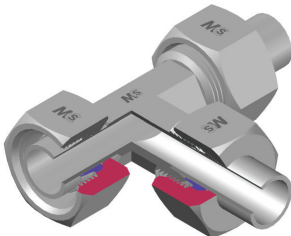
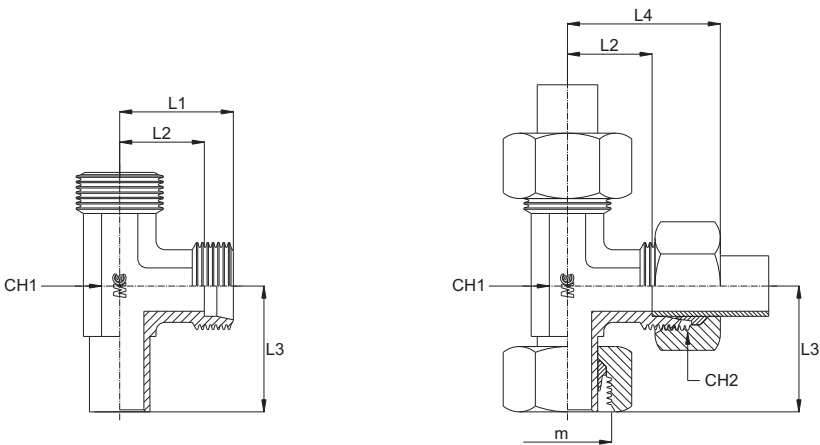


ADATTATORE DI ESTREMITÀ A T LATERALE A CODOLO  
STUD STANDPIPE BARREL TEE



Serie Series	Bar W.P.	Codice (Corpo) Part Number (Body)	Codice (Completo) Part Number (Complete)	Ø Est. Tubo Tube O.D.	L1	L2	L3	L4	CH1	CH2
L	315	TLVW06LB	TLVW06L	6	19,0	12,0	26,0	27,0	12	14
		TLVW08LB	TLVW08L	8	21,0	14,0	27,5	29,0	12	17
		TLVW10LB	TLVW10L	10	22,0	15,0	29,0	30,0	14	19
		TLVW12LB	TLVW12L	12	24,0	17,0	29,5	32,0	17	22
		TLVW15LB	TLVW15L	15	28,0	21,0	32,5	36,0	19	27
		TLVW18LB	TLVW18L	18	31,0	23,5	35,5	40,0	24	32
	160	TLVW22LB	TLVW22L	22	35,0	27,5	38,5	44,0	27	36
		TLVW28LB	TLVW28L	28	38,0	30,5	41,5	47,0	36	41
S	630	TLVW35LB	TLVW35L	35	45,0	34,5	51,0	56,0	41	50
		TLVW42LB	TLVW42L	42	51,0	40,0	56,0	63,0	50	60
	400	TLVW06SB	TLVW06S	6	23,0	16,0	27,0	31,0	12	17
		TLVW08SB	TLVW08S	8	24,0	17,0	27,5	32,0	14	19
		TLVW10SB	TLVW10S	10	25,0	17,5	30,0	34,0	17	22
		TLVW12SB	TLVW12S	12	29,0	21,5	30,5	38,0	17	24
	315	TLVW14SB	TLVW14S	14	30,0	22,0	34,5	40,0	19	27
		TLVW16SB	TLVW16S	16	33,0	24,5	36,5	43,0	24	30
		TLVW20SB	TLVW20S	20	37,0	26,5	44,0	48,0	27	36
		TLVW25SB	TLVW25S	25	42,0	30,0	50,0	54,0	36	46
		TLVW30SB	TLVW30S	30	49,0	35,5	55,0	62,0	41	50
		TLVW38SB	TLVW38S	38	57,0	41,0	63,0	72,0	50	60