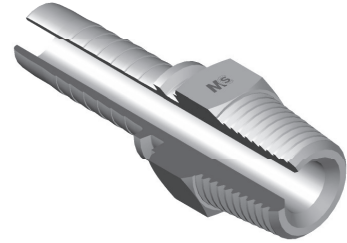
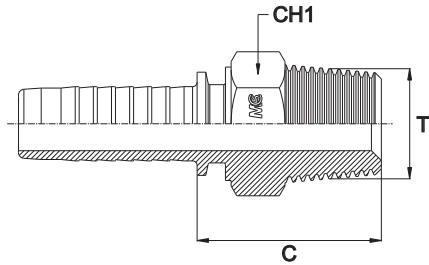


MASCHIO SVASATO 60°

Filetto Gas Conico

MALE 60° CONE

Thread BSP Taper

- AGR-K -

Bar W.P.	Codice Part Number	Filetto Thread	Ø Int. Tubo Inch. Hose I.D.	C Cut - Off	CH1
415	BSPTM0203	1/8"	3/16"	22,5	14
450	BSPTM0204	1/8"	1/4"	22,5	14
415	BSPTM0403	1/4"	3/16"	26,7	14
450	BSPTM0404	1/4"	1/4"	27,0	14
350	BSPTM0405	1/4"	5/16"	27,5	14
450	BSPTM0406	1/4"	3/8"	27,3	17
	BSPTM0604	3/8"	1/4"	28,6	19
350	BSPTM0605	3/8"	5/16"	29,0	19
450	BSPTM0606	3/8"	3/8"	29,5	19
415	BSPTM0608	3/8"	1/2"	29,0	19
350	BSPTM0610	3/8"	5/8"	29,5	22
415	BSPTM0804	1/2"	1/4"	32,0	22
	BSPTM0806	1/2"	3/8"	33,0	22
	BSPTM0808	1/2"	1/2"	32,5	22
350	BSPTM0810	1/2"	5/8"	28,5	22
	BSPTM0812	1/2"	3/4"	36,5	27
	BSPTM1208	3/4"	1/2"	35,0	27
	BSPTM1210	3/4"	5/8"	36,3	27
280	BSPTM1212	3/4"	3/4"	36,5	27
	BSPTM1216	3/4"	1"	37,5	32
	BSPTM1612	1"	3/4"	43,5	36
210	BSPTM1616	1"	1"	44,5	36
	BSPTM1620	1"	1"1/4"	47,0	41
	BSPTM2016	1"1/4"	1"	47,0	46
185	BSPTM2020	1"1/4"	1"1/4"	48,0	46
185	BSPTM2424	1"1/2"	1"1/2"	46,0	50
165	BSPTM3232	2"	2"	49,0	65